

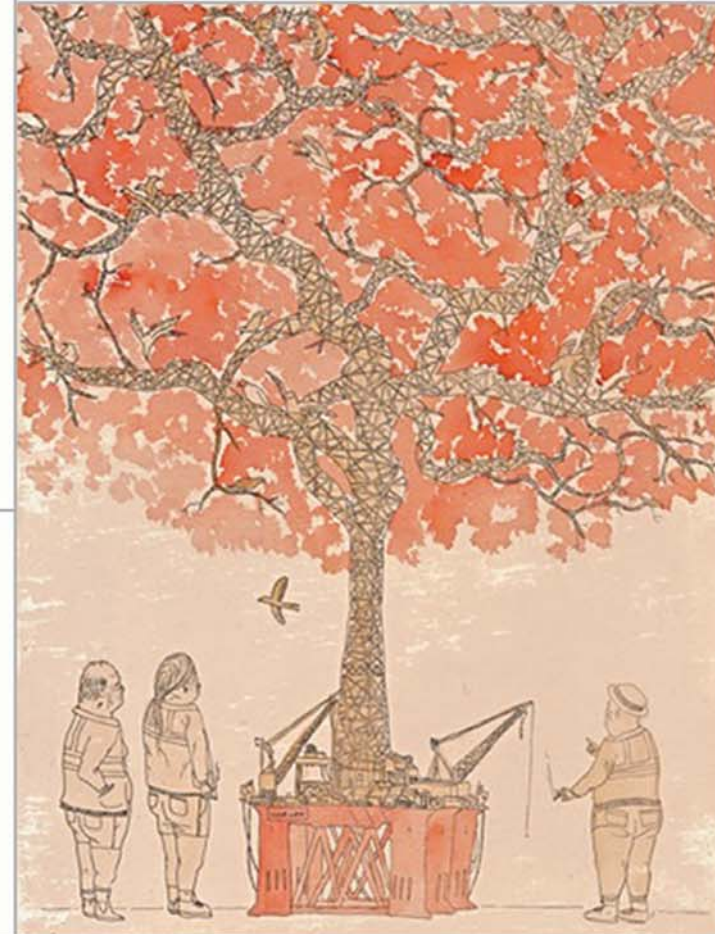


PORTLAND SECONDARY COLLEGE  
**TOP ARTS** *EXCELLENCE*

I focused on the effect of industry on nature. The process began when an oil rig visited my hometown. This unfamiliar construction was in blatant contrast to the natural environment. I developed imagery to highlight the qualities of trees by using the grainy texture of a wood-cut to contrast with the mechanical shapes of the rig. The use of autumnal leaves and fleeing birds illustrates how industrialisation can ruin a natural environment, and expresses its detrimental effect on our coastal town.

Jesse Dolman

2008



**Oil Rig Tree**

35.0 x 26.0 cm

woodcut, transfer print, watercolour